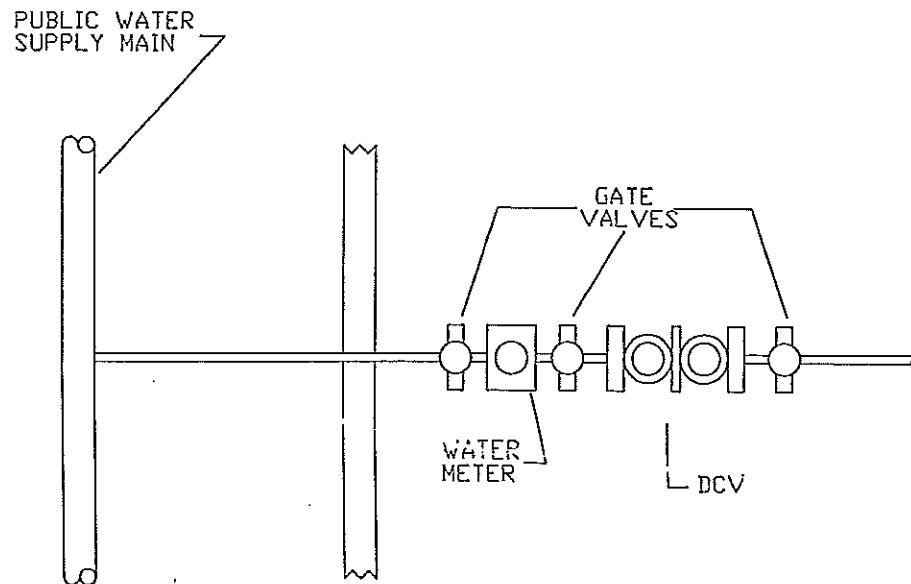


NOTE: DEVICE TO BE INSTALLED ABOVE HIGHEST POSSIBLE FLOODING.



NOTES:

1. ALL BACKFLOW PREVENTION (BFP) DEVICES MUST BE APPROVED BY THE NEW YORK STATE DEPARTMENT OF HEALTH (NYSDOH).
2. THE BFP DEVICE SHALL BE INSTALLED AS SHOWN ON THE APPROVED PLANS IN A HEATED, LIGHTED AREA ABOVE THE HIGHEST POSSIBLE FLOOD LEVEL. THE INSTALLATION MUST BE IN CONFORMANCE WITH THE REQUIREMENTS OF THE NYSDOH, WATER SUPPLIER AND LOCAL PLUMBING CODES. DEVIATION FROM THE APPROVED PLANS ARE NOT ALLOWED WITHOUT THE PERMISSION OF THE WATER SUPPLIER.
3. THE BFP DEVICE WILL CAUSE A DECREASE IN WATER PRESSURE. SEE MANUFACTURER'S FLOW CURVES FOR PRESSURE LOSSES.
4. ADEQUATE SUPPORT FOR THE BFP DEVICE IS TO BE PROVIDED.
5. A THERMAL EXPANSION TANK SHOULD BE INSTALLED ON THE COLD WATER MAKE-UP LINES TO DIRECT FIRED STORAGE TANKS. A WORKING PRESSURE RELIEF VALVE MUST BE MAINTAINED AT ALL TIMES.
6. THE BFP DEVICE IS TO BE TESTED BY A NYSDOH CERTIFIED TESTER AT THE TIME OF INSTALLATION AND AT LEAST ANNUALLY THEREAFTER. TEST RESULTS ARE TO BE SUBMITTED TO THE WATER SUPPLIER.
7. MAINTENANCE OF THE BFP DEVICE SHALL BE THE RESPONSIBILITY OF THE WATER CUSTOMER. BFP DEVICES SHOULD BE DISASSEMBLED AND OVERHAULED EVERY FIVE YEARS.
8. IT IS UNLAWFUL TO TAMPER WITH THE BFP DEVICE, TO INSTALL ANY OUTLET OR CONNECTION AHEAD OF THE DEVICE, TO INSTALL AN UNPROTECTED BYPASS AROUND THE DEVICE, OR TO REMOVE THE DEVICE FROM SERVICE WITHOUT THE APPROVAL OF THE WATER SUPPLIER.

APPROVED:	DATE:
BY: _____	DATE: _____
APPROVED:	DATE:
BY: _____	DATE: _____
APPROVED:	DATE:
BY: _____	DATE: _____

APPROVED:	DATE:
BY: _____	DATE: _____
N.Y.S.P.E.# _____	DATE: _____

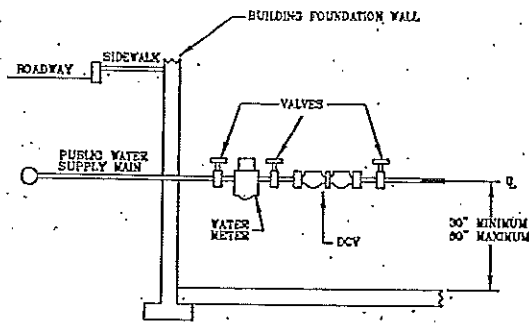
BACKFLOW PREVENTION DEVICE FOR:
CUSTOMER _____
ADDRESS _____
TELEPHONE _____

REV. NO.	REVISIONS	BY	APPROVED	DATE



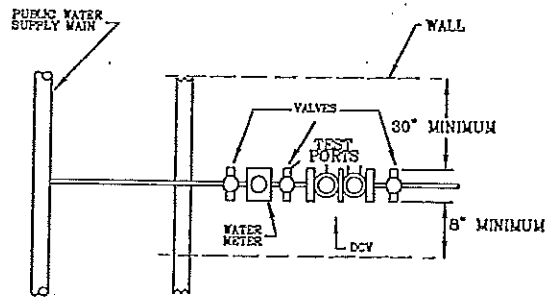
SIGNATURE	DATE
BRAWN CASLER	20 JUL 92
CHECKED	
ENGRG RP	20 JUL 92
ISSUED	
DISC: 120	
RETRIEVE: VD920001	

BOARD OF PUBLIC UTILITIES JAMESTOWN, NEW YORK	
DOUBLE CHECK VALVE ASSEMBLY BACKFLOW PREVENTER ON A DOMESTIC WATER SERVICE 2" & SMALLER	
SIZE	DWG. NO. WD920001
SCALE	REV. 0 SHEET

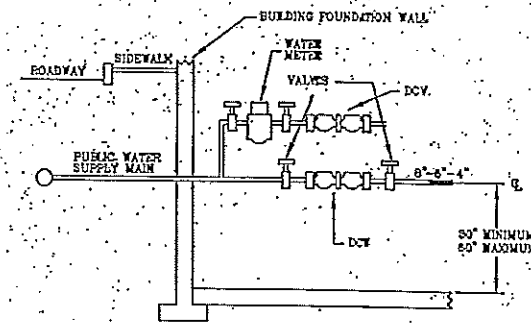


TYPICAL DOUBLE CHECK VALVE ASSEMBLY BACKFLOW PREVENTOR ON A DOMESTIC WATER SERVICE 2" & SMALLER

NOTE: DEVICE TO BE INSTALLED ABOVE HIGHEST POSSIBLE FLOODING.



DRAWING NO.1

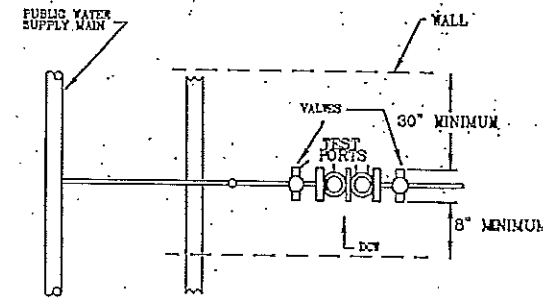


COMBINED DOMESTIC/FIRE LINE INSTALLATION.
FIRE LINE-WITH DOUBLE DETECTOR CHECK ASSEMBLY WITH BY-PASS METER ON FIRE LINE.
DOMESTIC LINE-WITH DOUBLE CHECK ASSEMBLY.
FIRE LINE WITH DOMESTIC SERVICE

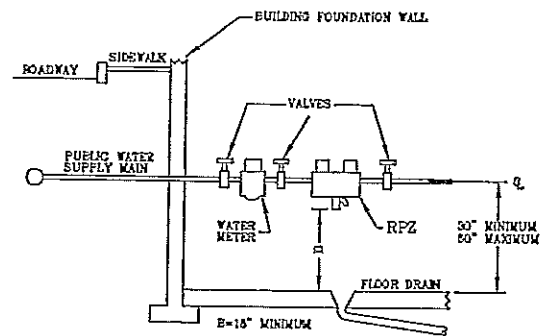
ALL FIRE SERVICES WILL BE FITTED WITH AT LEAST A DOUBLE DETECTOR CHECK VALVE ASSEMBLY BACKFLOW PREVENTOR WITH A BY-PASS METER TO DETECT LEAKS AND UNAUTHORIZED USE. FIRE LINE WILL REQUIRE A REDUCED PRESSURE ZONE DETECTOR ASSEMBLY BACKFLOW PREVENTOR WHEN AN AUXILIARY SUPPLY OF WATER MAY BE LOCATED WITHIN 1700 FEET OF THE PUMP/CONNECTIONS, WHERE ANTI-FREEZE OR OTHER ADDITIVES ARE USED, AND WHERE FIRE LINE IS SUPPLIED FROM PUBLIC MAINS AND INTERCONNECTED WITH AUXILIARY SUPPLY SUCH AS PUMPS TAKING SUCTION FROM RESERVOIRS EXPOSED TO CONTAMINATION, OR RIVERS AND PONDS, DRIVEN WELLS OR OTHER INDUSTRIAL WATER SYSTEMS.

IF DOMESTIC LINE IS ABOVE FIRE LINE, THE DISTANCE BETWEEN THEM MUST BE AT LEAST 18". THE TOP LINE SHALL NOT BE HIGHER THAN 60" FROM THE FLOOR.

NOTE: DEVICE TO BE INSTALLED ABOVE HIGHEST POSSIBLE FLOODING.



DRAWING NO.3

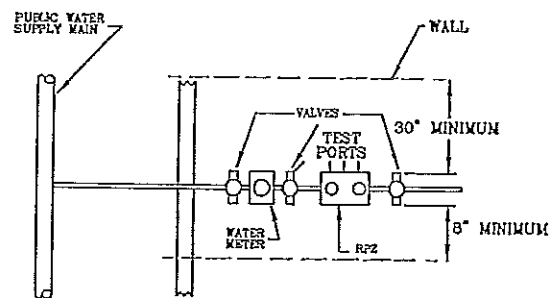


TYPICAL REDUCED PRESSURE ZONE BACKFLOW PREVENTOR ON A DOMESTIC WATER SERVICE 2" & SMALLER

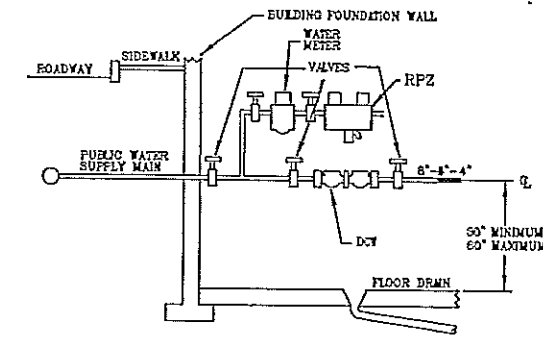
NOTES:

1. ALL BACKFLOW PREVENTION (BFP) DEVICES MUST BE APPROVED BY THE NEW YORK STATE DEPARTMENT OF HEALTH (NYSDOH).
2. THE BFP DEVICE SHALL BE INSTALLED AS SHOWN ON THE APPROVED PLANS IN A HEATED, LIGHTED AREA ABOVE THE HIGHEST POSSIBLE FLOOD LEVEL. THE INSTALLATION MUST BE IN CONFORMANCE WITH THE REQUIREMENTS OF THE NYSDOH, WATER SUPPLIER AND LOCAL PLUMBING CODES. DEVIATION FROM THE DEVICE APPROVED PLANS ARE NOT ALLOWED WITHOUT THE PERMISSION OF THE WATER SUPPLIER.
3. THE BFP DEVICE WILL CAUSE A DECREASE IN WATER PRESSURE. SEE MANUFACTURER'S FLOW CURVES FOR PRESSURE LOSSES.
4. AN AIR GAP OR AIR GAP FITTING MUST BE MAINTAINED AT THE RELIEF PORT OF REDUCED PRESSURE ZONE (RPZ) DEVICES.
5. DRAINAGE CAPACITY MUST BE ABLE TO HANDLE THE MAXIMUM RELIEF VALVE DISCHARGE OF THE RPZ DEVICE BASED ON MANUFACTURER'S RELIEF VALVE DISCHARGE RATE CURVES. DIRECT DRAIN CONNECTIONS TO SEWERS ARE PROHIBITED.
6. ADEQUATE SUPPORT FOR THE BFP DEVICE IS TO BE PROVIDED.
7. THE BFP DEVICE IS TO BE TESTED BY A NYSDOH CERTIFIED TESTER AT THE TIME OF INSTALLATION AND AT LEAST ANNUALLY THEREAFTER. TEST RESULTS ARE TO BE SUBMITTED TO THE WATER SUPPLIER.
8. MAINTENANCE OF THE BFP DEVICE SHALL BE THE RESPONSIBILITY OF THE WATER CUSTOMER. BFP DEVICES SHOULD BE DISASSEMBLED AND OVERHAULED EVERY FIVE YEARS.
9. IT IS UNLAWFUL TO TAMPER WITH THE BFP DEVICE, TO INSTALL ANY OUTLET OR CONNECTION AHEAD OF THE DEVICE, TO INSTALL AN UNPROTECTED BYPASS AROUND THE DEVICE, OR TO REMOVE THE DEVICE FROM SERVICE WITHOUT THE APPROVAL OF THE WATER SUPPLIER.

NOTE: DEVICE TO BE INSTALLED ABOVE HIGHEST POSSIBLE FLOODING.

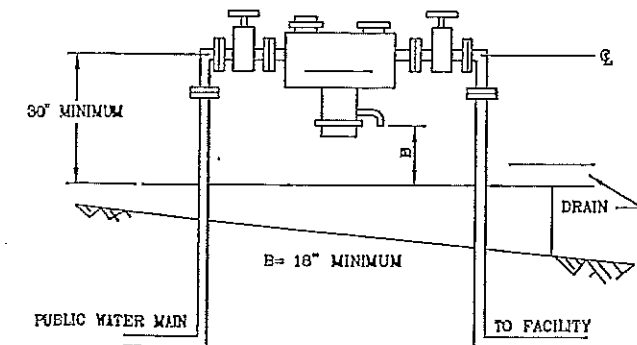
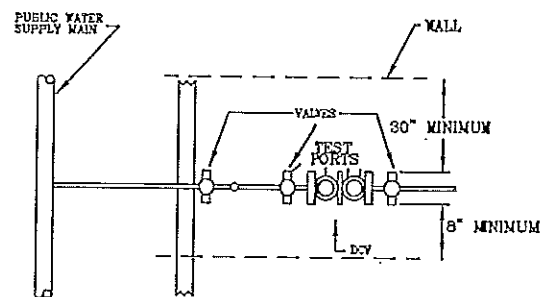


DRAWING NO.2



COMBINED DOMESTIC/FIRE LINE INSTALLATION.
FIRE LINE WITH DOUBLE DETECTOR CHECK ASSEMBLY WITH BY-PASS METER ON FIRE LINE.
DOMESTIC LINE-WITH REDUCED PRESSURE ZONE ASSEMBLY.

NOTE: DEVICE TO BE INSTALLED ABOVE HIGHEST POSSIBLE FLOODING.



ABOVE GRADE INSTALLATION ON SLAB INSIDE OF BUILDING

DRAWING NO.4

APPROVED:	APPROVED:
BY: _____ DATE: _____	BY: _____ DATE: _____
APPROVED:	BY: _____ DATE: _____
BY: _____ DATE: _____	APPROVED:
BY: _____ DATE: _____	BY: _____ DATE: _____

APPROVED:	APPROVED:
BY: _____ DATE: _____	BY: _____ DATE: _____
APPROVED:	BY: _____ DATE: _____
BY: _____ DATE: _____	APPROVED:
BY: _____ DATE: _____	BY: _____ DATE: _____

BACKFLOW PREVENTION DEVICE FOR:
CUSTOMER _____
ADDRESS _____
TELEPHONE _____

REV. NO.	REVISIONS	BY	APPROVED	DATE



SIGNATURE	DATE
DRAWN CASLER	20JUN92
CHECKED	
ENGRG RP	20JUN92
ISSUED	
DISC 126	SIZE
RETRIVED WD/20003	SCALE

BOARD OF PUBLIC UTILITIES	
JAMESTOWN, NEW YORK	
STANDARD BACKFLOW CONNECTIONS FOR AREA SERVED BY JAMESTOWN B.P.U.	
DISC 126	DWG. NO. WD920003
RETRIVED WD/20003	REV. 0 SHEET